

[Foxwell NT510 Elite Full Systems Scanner](#) is able to work with 25 car brands until 2020 now. However, it comes with no software as default, you can download the first software + obd for free on official website! The following article will show you how to download and install FoxAssist first, and then how to activate NT510 Elite and update car software successfully (BMW for example).

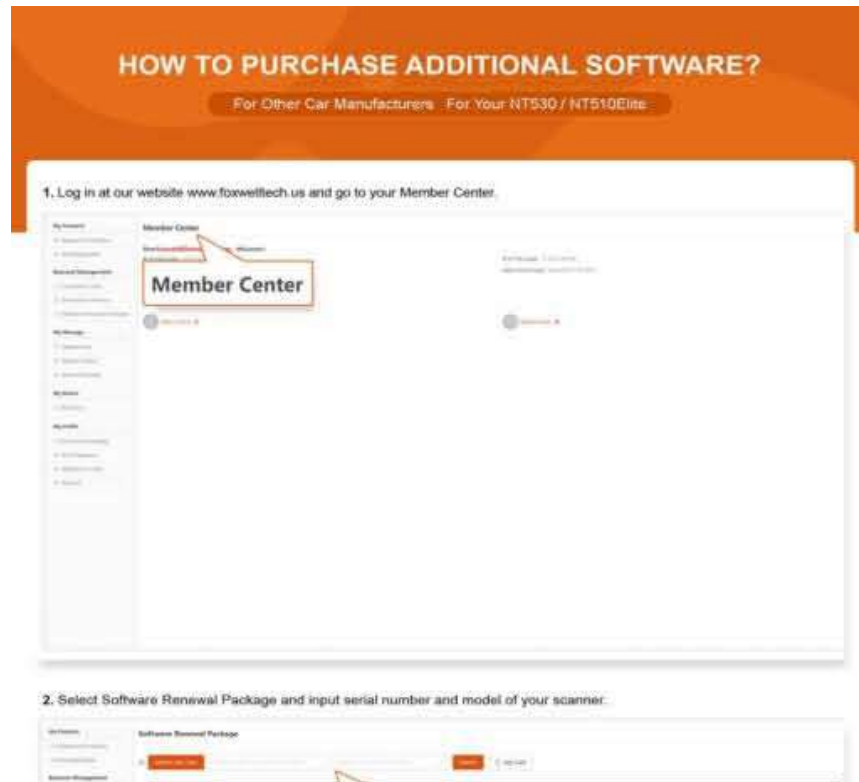
To update scanner, you need the following tools:

- The scan tool
- PC application FoxAssist
- PC or laptop with USB ports
- Internet service

To be able to use update tool, PC or laptop must meet the following minimum requirements:

- Operation System: Windows 7, Windows 8 and Windows 10.
- CPU: Intel P III or better
- RAM: 64MB or better
- Hard Disk Space: 30MB or better
- Display: 800*600 pixel, 16 byte true color display or better
- Internet Explorer 4.0 or newer

Firstly, to purchase additional software by following the below instruction:





3. Select the right software package and click **Add to My Cart**. Then Click **My Cart** to check your order.



Software Package Coverage:

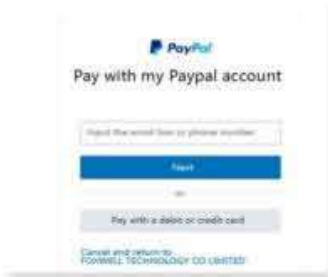
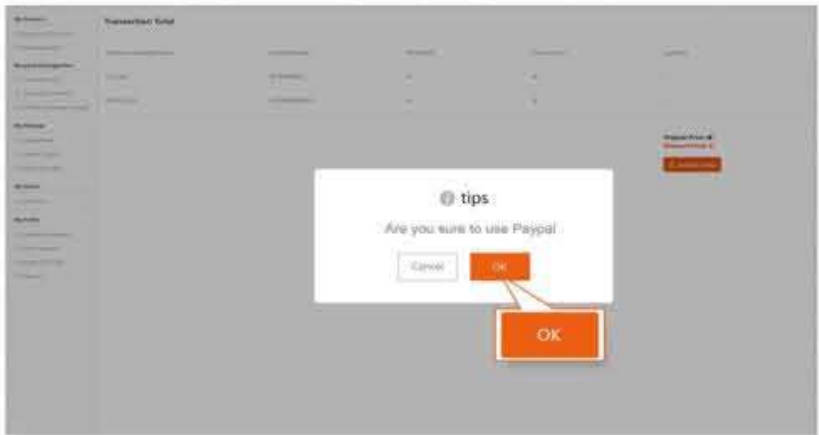
Part No.	Software Included	Part No.	Software Included
Aston Martin	Aston Martin	Maserati	Maserati
Benz	Benz,Maybach,Smart,Sprinter	Mazda	Mazda
BMW	BMW,Mini, Rolls-royce	Mitsubishi	Mitsubishi
Chrysler	Chrysler, jeep, Dodge	Nissan	Nissan, Infiniti
Ferrari	Ferrari	Opel	Opel, Vauxhall
Fiat	Abarth, Alfa, Romeo, Fiat, Lancia	Porsche	Porsche
AU Ford	AU Ford, Ford (Only for Australian region)	Renault	Renault, Dacia, Samsung
Ford	Ford	Toyota	Toyota, Lexus, Scion
GM	GM	VW	VW, VW_CV, Audi, Bentley,
Hyundai	Hyundai, Kia		Bugatti, Lamborghini, Seat, Skoda
Honda	Honda, Acura	Volvo	Volvo
Holden	Holden (Only for Australian region)	Peugeot	Peugeot, Citroen
Land Rover	Land Rover,Jaguar		

4. Click **Checkout** button to **Submit Order** button for payment and purchase.



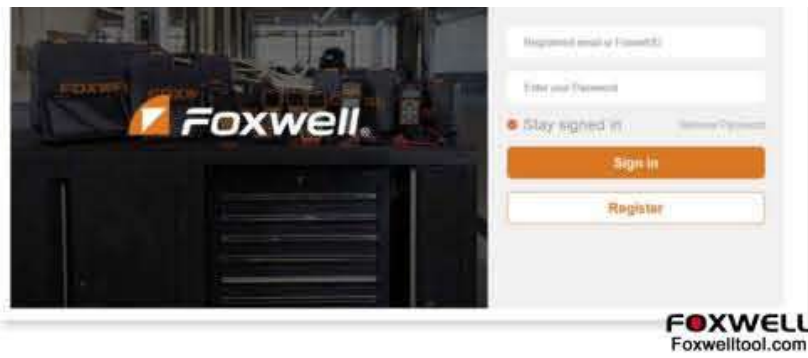


5. If you have finished shopping, please click OK to go to the payment page.



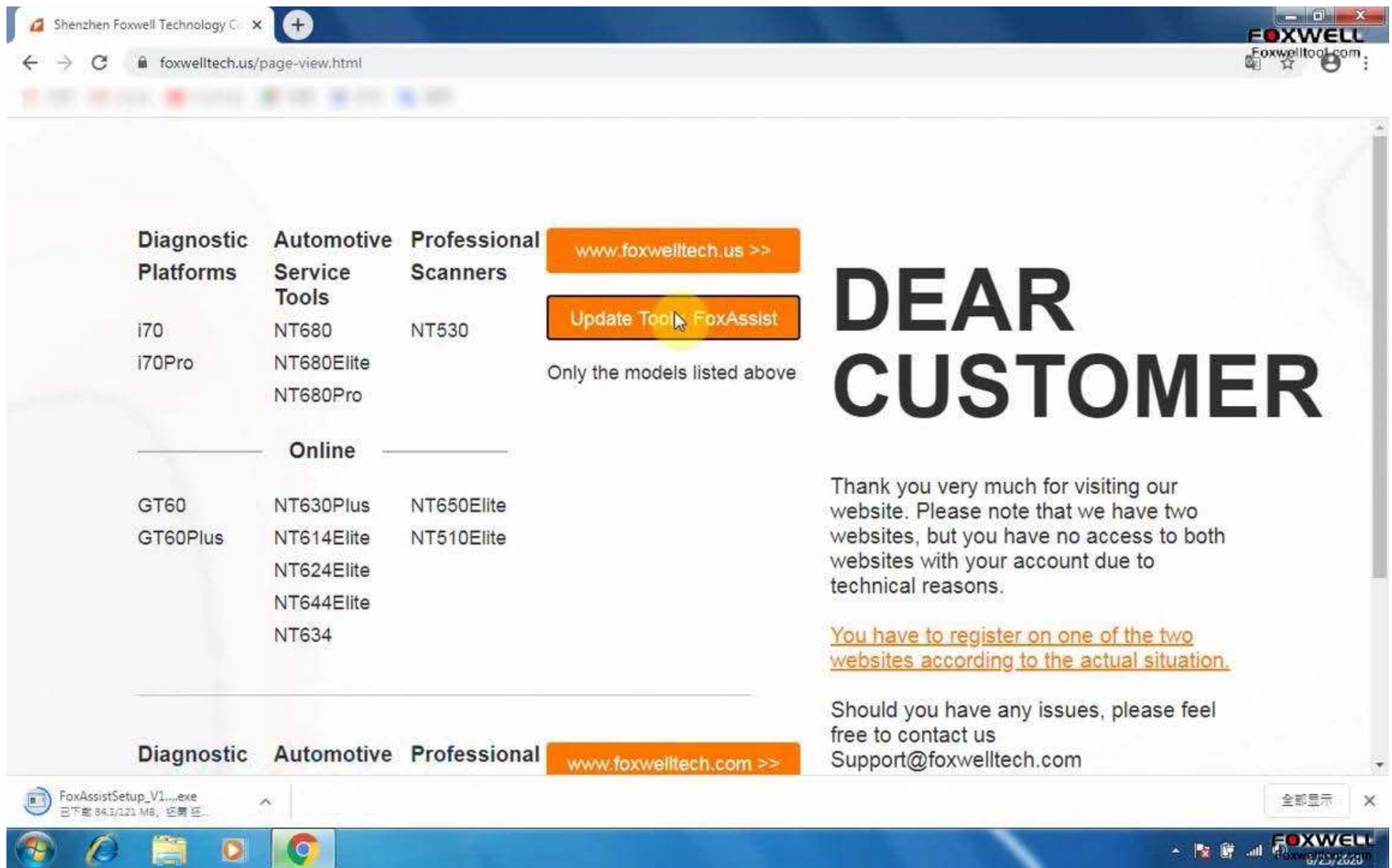
6. Please login the FoxAssist to download the purchased software after the payment.





Browse www.foxwelltech.us.

Click on "Update Tools FoxAssist" to download and install.



I accept agreement.

Select destination location.

Next...

Installing the FoxAssist Setup Wizard.

Complete installing.

Restart the computer later.

The screenshot shows a web browser window with the URL foxwelltech.us/page-view.html. The page content includes a navigation menu with categories like "Diagnostic Platforms" and "Automotive Service Tools", and a list of product models such as NT680, NT680Elite, and NT680Pro. A "Setup - FoxAssist" dialog box is open in the foreground, displaying the Foxwell logo and the text "Completing the FoxAssist Setup Wizard". The dialog box asks: "To complete the installation of FoxAssist, Setup must restart your computer. Would you like to restart now?" and provides two options: "Yes, restart the computer now" (selected) and "No, I will restart the computer later". A yellow circle highlights the "Finish" button at the bottom of the dialog box. The background page also features a large "AR CUSTOMER" heading and a contact information section with the website www.foxwelltech.com and email Support@foxwelltech.com.

Open FoxAssist on the desktop. Register a member with an email.

Input the email and the password, then "Sign in".

Recycle Bin

PCME

TC179

Flash
Pro 5

Flash
Pro 5

Go
Chro

FoxAssist



— X

Registered email or Foxwell ID

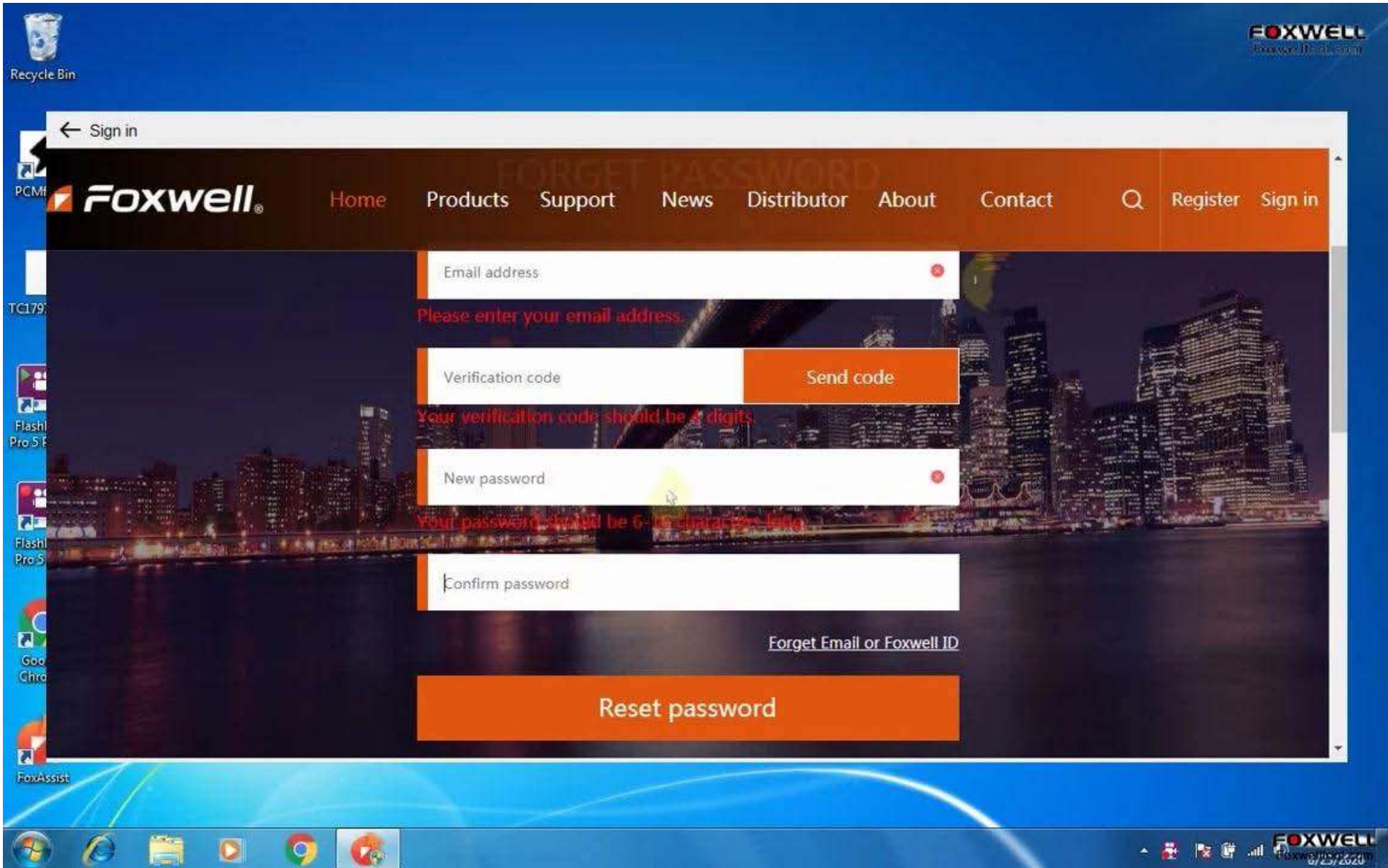
Password

Stay signed in [Forget password](#)

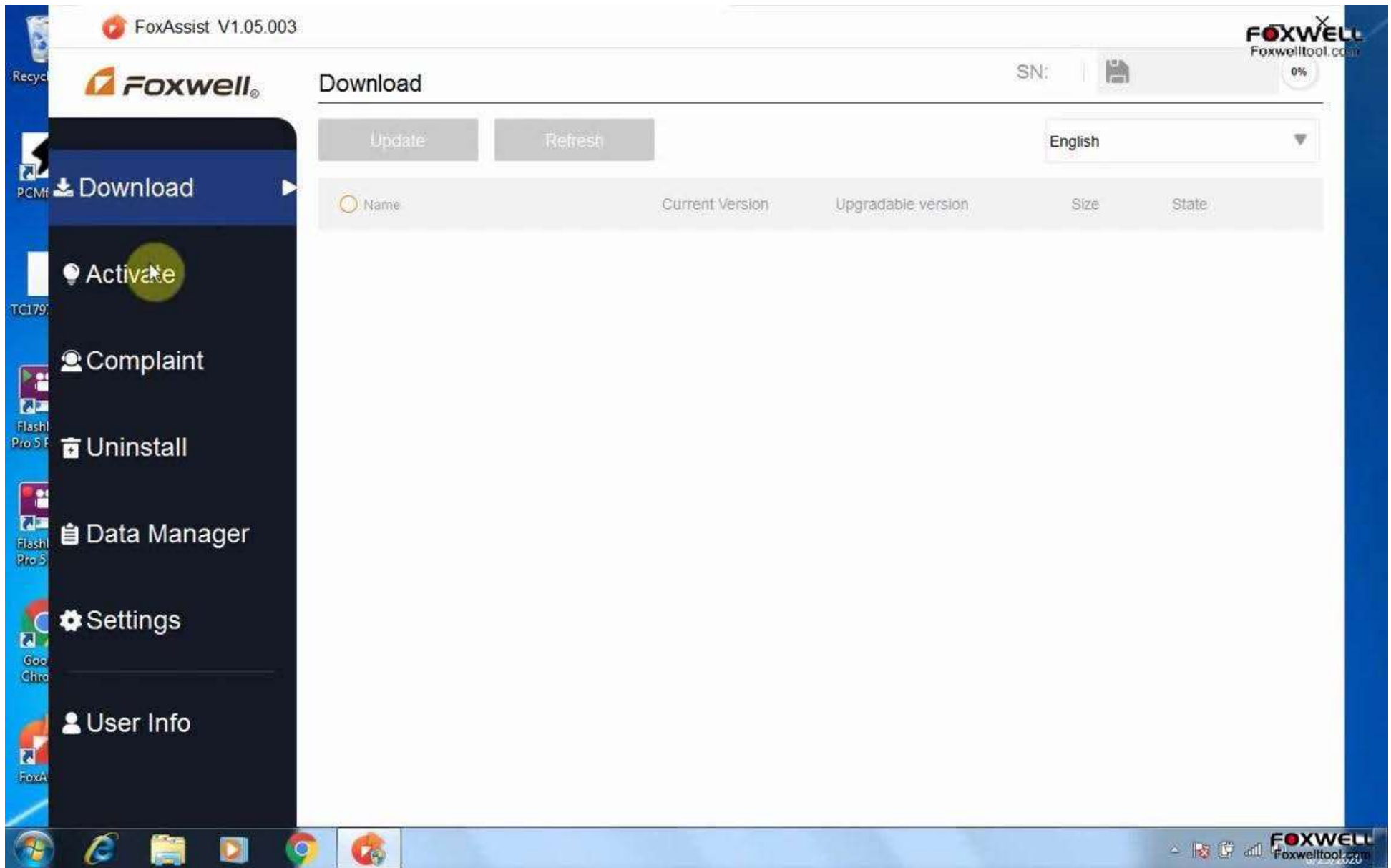
Sign in

Register





Look at the FoxAssist menu.



Click on "Activate", and it will pop up "please insert Micro SD card" (just wait a while, I will do in next step).

Then to input the serial number (which is pasted on the back of Foxwell NT510 Elite device), then click on "Activate" until you can see it pops up "activated successfully".



Activate

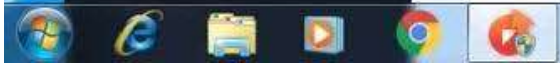
Serial Number

Activate

Number	Serial Number	Product Type	Expiration Date
--------	---------------	--------------	-----------------

Please insert Micro SD card.

- Download
- Activate
- Complaint
- Uninstall
- Data Manager
- Settings
- User Info





Activate

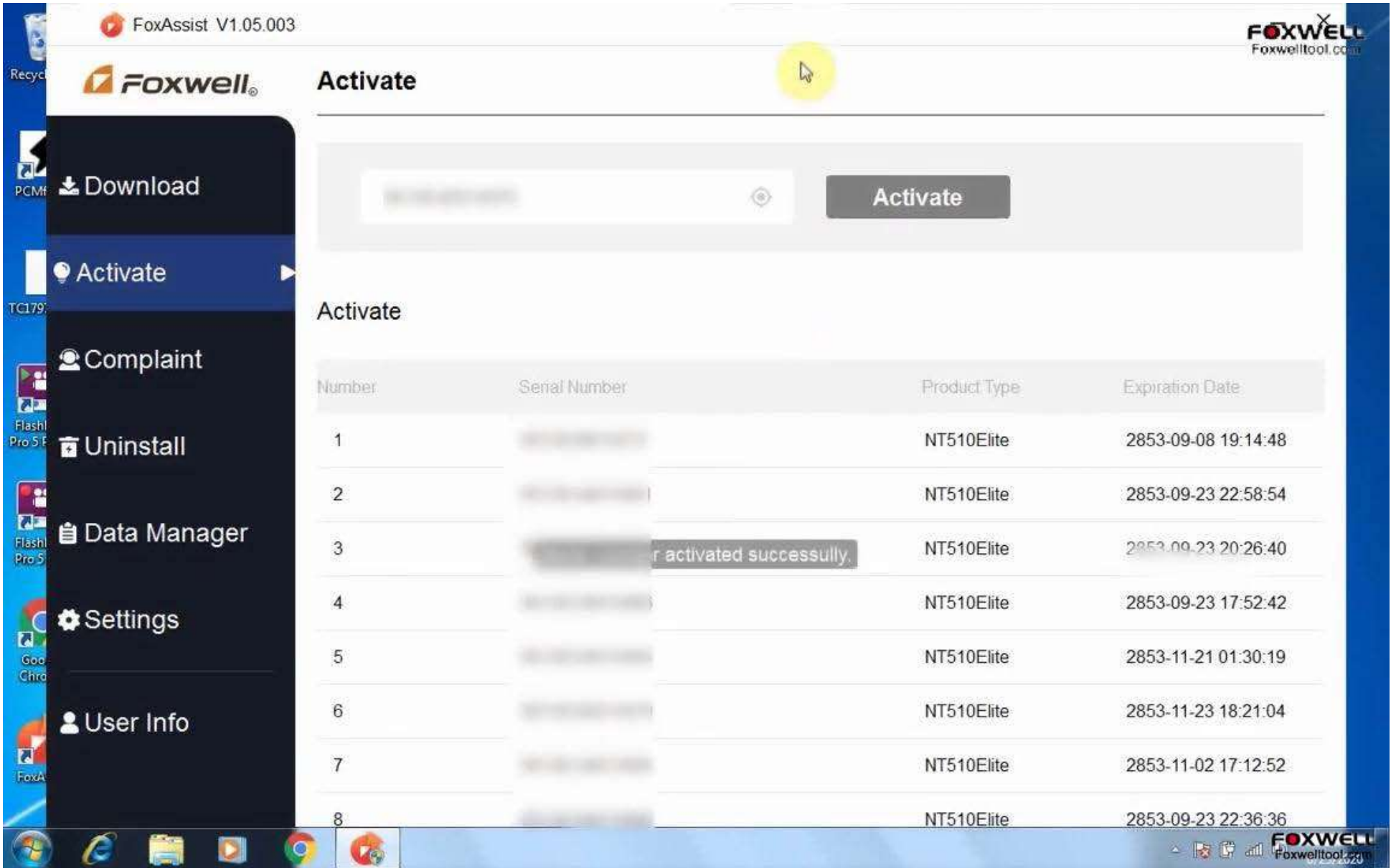
Activate

Number	Serial Number	Pro
--------	---------------	-----

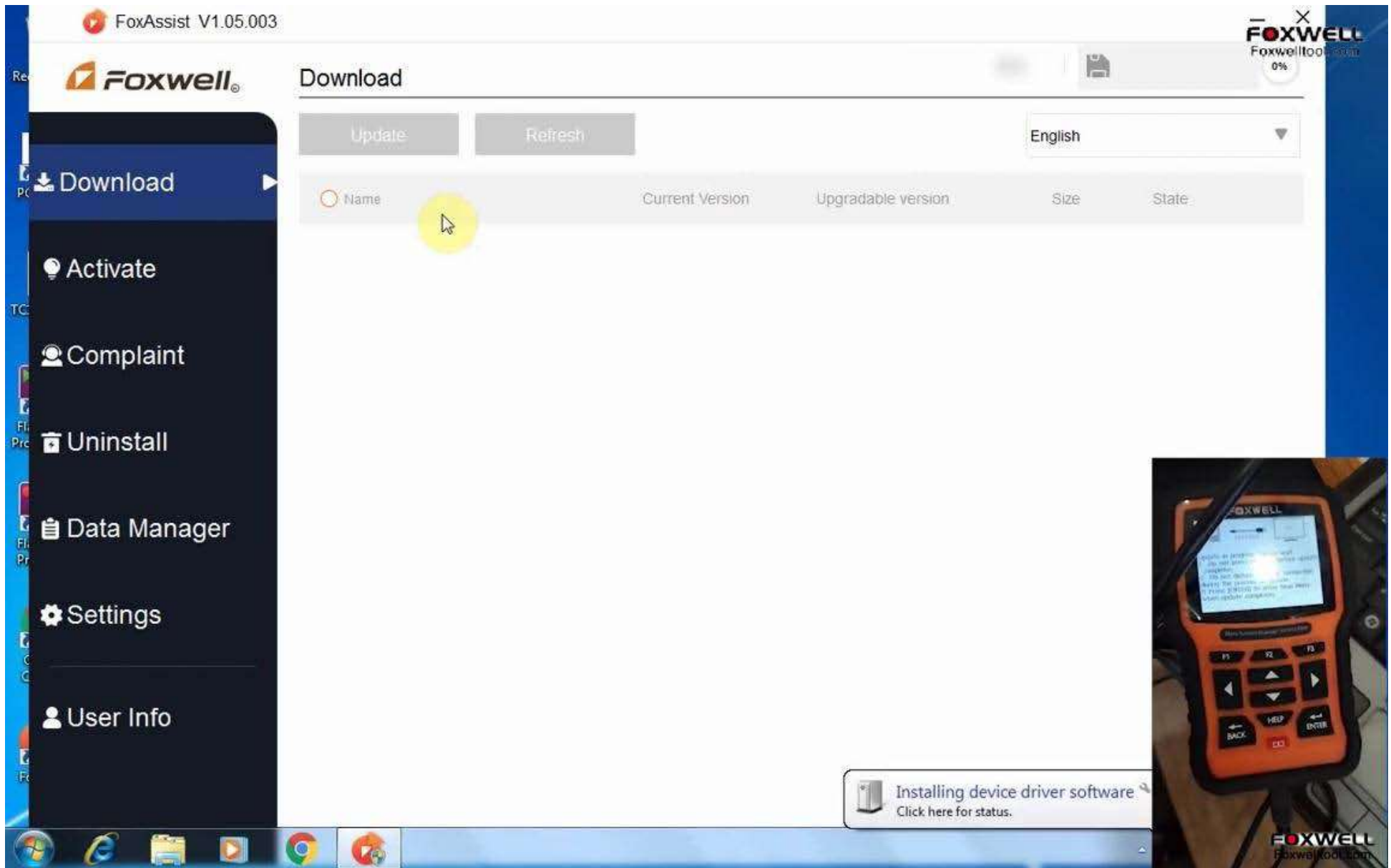
- Download
- Activate
- Complaint
- Uninstall
- Data Manager
- Settings
- User Info



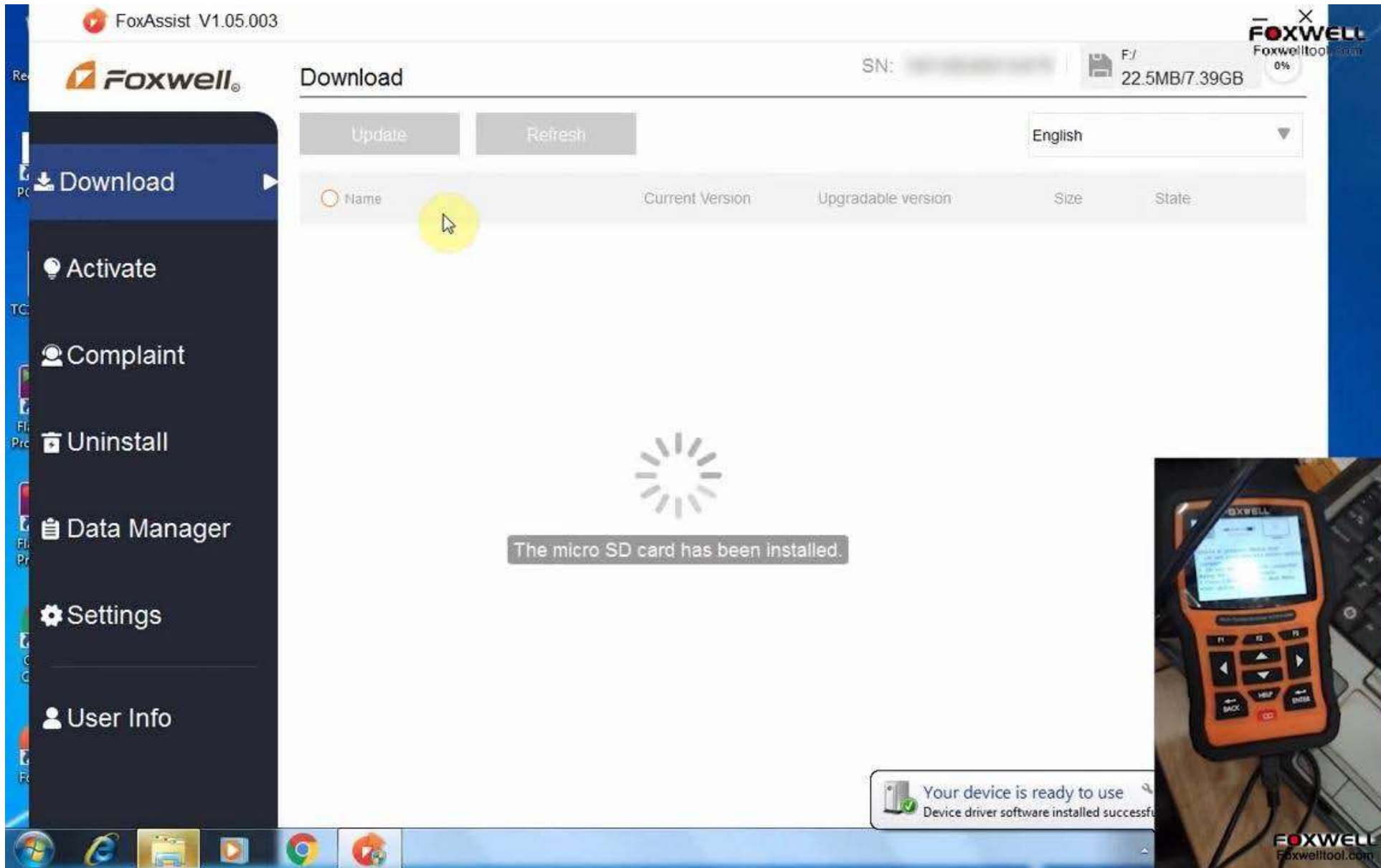
The key is on the back of the device



Next is to click on "Download". Meanwhile, use the USB cable to connect the [NT510 Elite](#) to the Windows PC and then select "Update" option (or using SD card reader to connect the SD card to the PC directly), then have prompt at the right corner of the computer "Installing device driver software".



You can see, it pops up "Your device is ready to use" and "The micro SD card has been installed".



Update: No vehicle software is pre-installed in the device. Please select a vehicle software to download and install.

FoxAssist V1.05.003

FOXWELL
Foxwelltool.com

SN: [REDACTED] F:/ 22.5MB/7.39GB 0%

Download

Update Refresh English

Name	Current Version	Upgradable version	Size	State
------	-----------------	--------------------	------	-------

Update

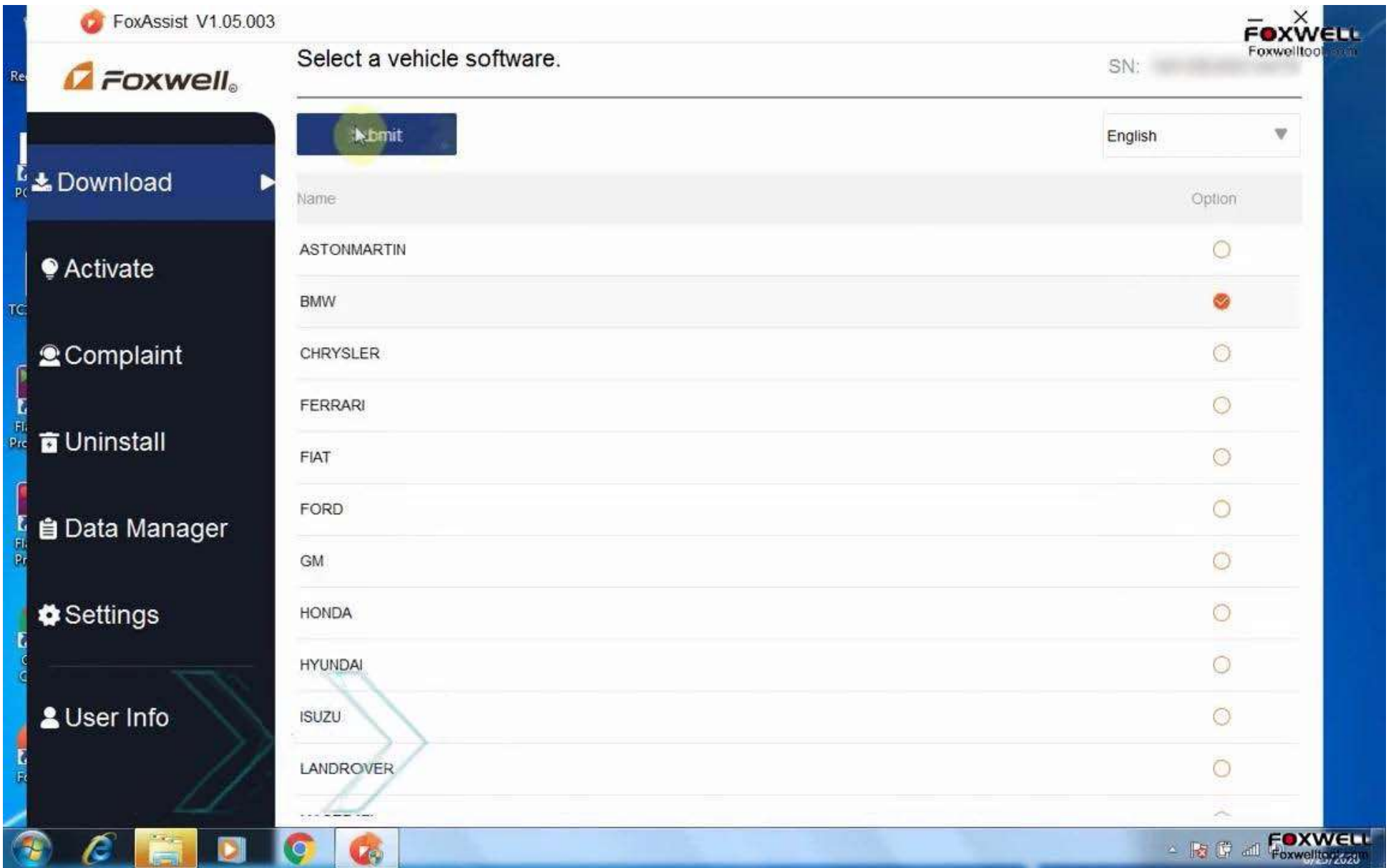
No vehicle software is pre-installed in the device. Please select a vehicle software to download and install.

The micro SD card has been installed.
OK

Your device is ready to use
Device driver software installed successfully

FOXWELL
Foxwelltool.com

Choose "BMW" to submit.



The configuration is successful. Click on "Update".

The language is English as default, for any other language, you just select the language you want when ordering at foxwelltool.com.

FoxAssist V1.05.003

FOXWELL
Foxwelltools.com

SN: [REDACTED] F:/ 22.5MB/7.39GB 0%

Download

Update Refresh English

<input type="radio"/> Name	Current Version	Upgradable version	Size	State
<input checked="" type="checkbox"/> HOME		V1.07.004	2.85MB	Ready
<input checked="" type="checkbox"/> Common Text Library		V1.10.003	37KB	Ready
<input checked="" type="checkbox"/> BMW		V1.40.012	681MB	Ready
<input type="radio"/> FoxAssist	V1.05.003	V1.05.003	121MB	Ready
<input type="radio"/> OBDII	V1.20.011	V1.20.011	1.2MB	Ready

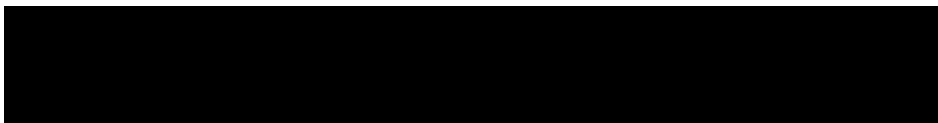
Download

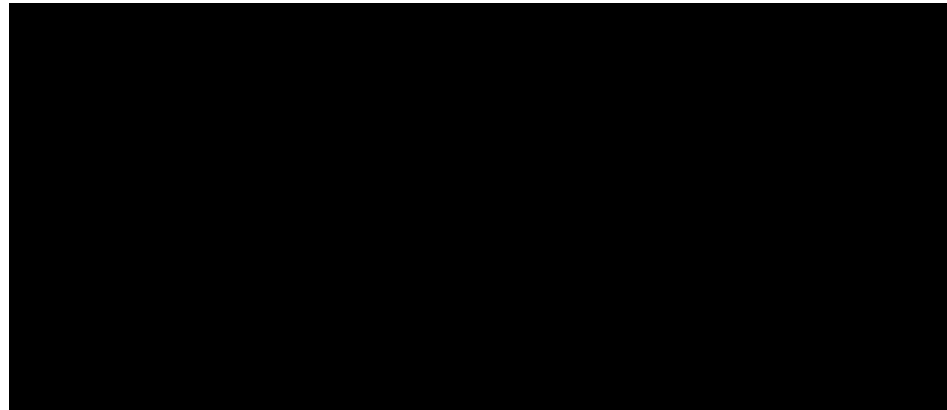
- Activate
- Complaint
- Uninstall
- Data Manager
- Settings
- User Info

FOXWELL
Foxwelltools.com
2020

Okay, that's all.

Youtube video demo:





Foxwell NT510 Elite tech support: <https://www.foxwelltool.com/>